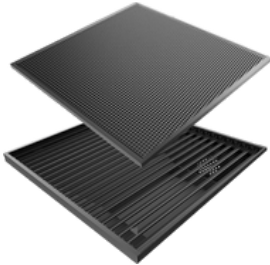




**COLIBRI
TECHNICS**

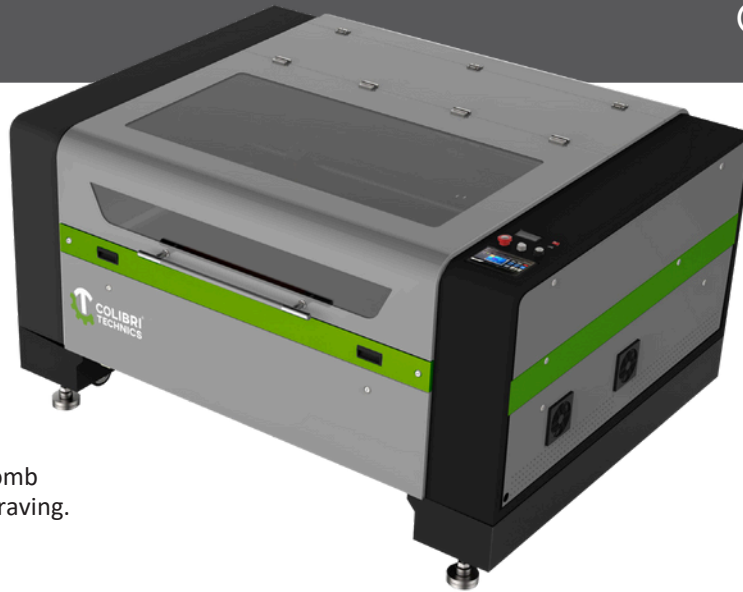
CO2 LASER CUTTING MACHINE

CT-1390N



Double Platforms

Both knife blade and honeycomb platforms for cutting and engraving.



130x90cm



100w / 120w / 150w



Electronic lifting

The machine can automatic adjust the working table to satisfy the demands of cutting different thicknesses materials. The lifting height can reach 20cm.



Automatic Focusing

Auto focusing makes the laser head focus easily and quickly. Do not need to adjust the focal length by hand, saving much time and has higher accuracy.



RECI Laser Tube

Higher laser output power density, concentrated light beam, uniformly light spot, high working efficiency, high cutting speed. The laser tube adopts the special manufacturing technique, the laser beam is sharpen after focusing, the mark line is narrow, the scale is deep, the resolution is high, the picture character is clear.

High Efficiency Air Filters

- Environmentally friendly and pollution-free laser can be directly used indoors. Tertiary filtration. Filter large particles in bags. HEPA filtration larger than 0.03UM particle. Activated carbon adsorption system.



Technical Parameters

Engraving Area	Sealed CO2 laser tube 100W / 120W / 150W (optional)	Working Voltage	AC 110-220V±10%,50-60Hz
Laser Power		Gross Power	<1,500W
Engraving Area	1300mm x 900mm 0 -	Cooling Mode	Water-cooling and protection system
Cutting Speed	24,000mm/min ±0.05mm 1820*	Auxiliary Equipments	Exhaust-fans, air-exhaust pipe
Positioning Accuracy	1310* 1070mm	Controlling Software	DSP control system
Whole Machine Size		Driving System	Stepper